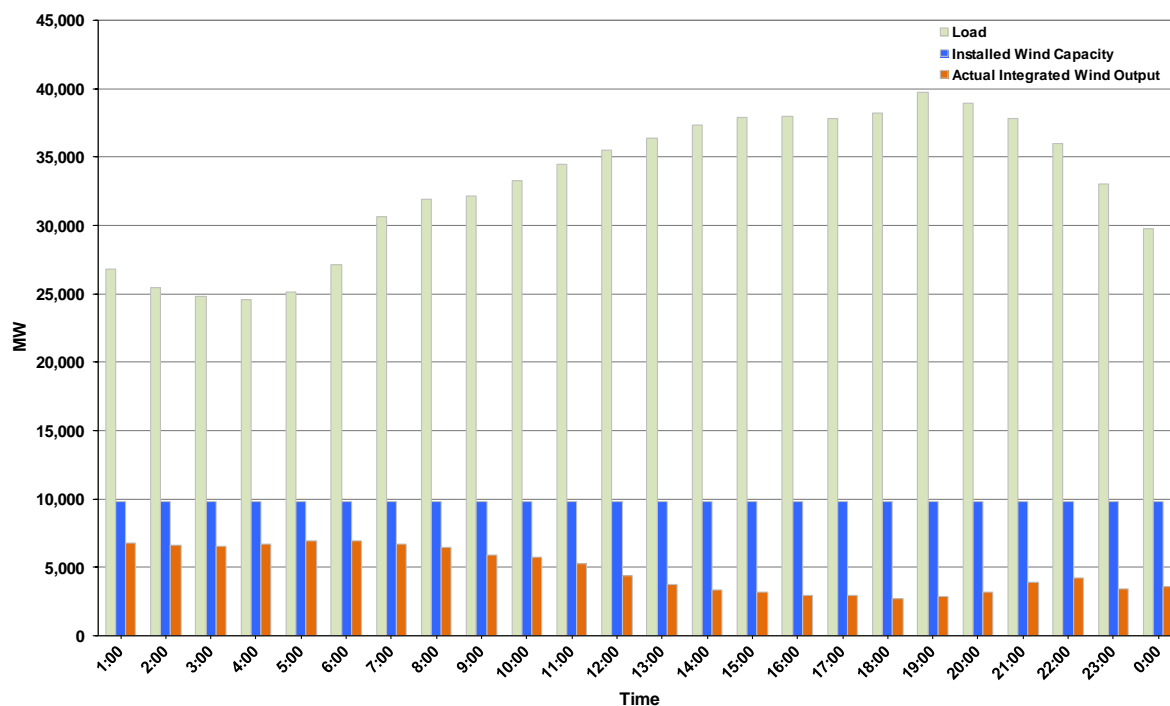




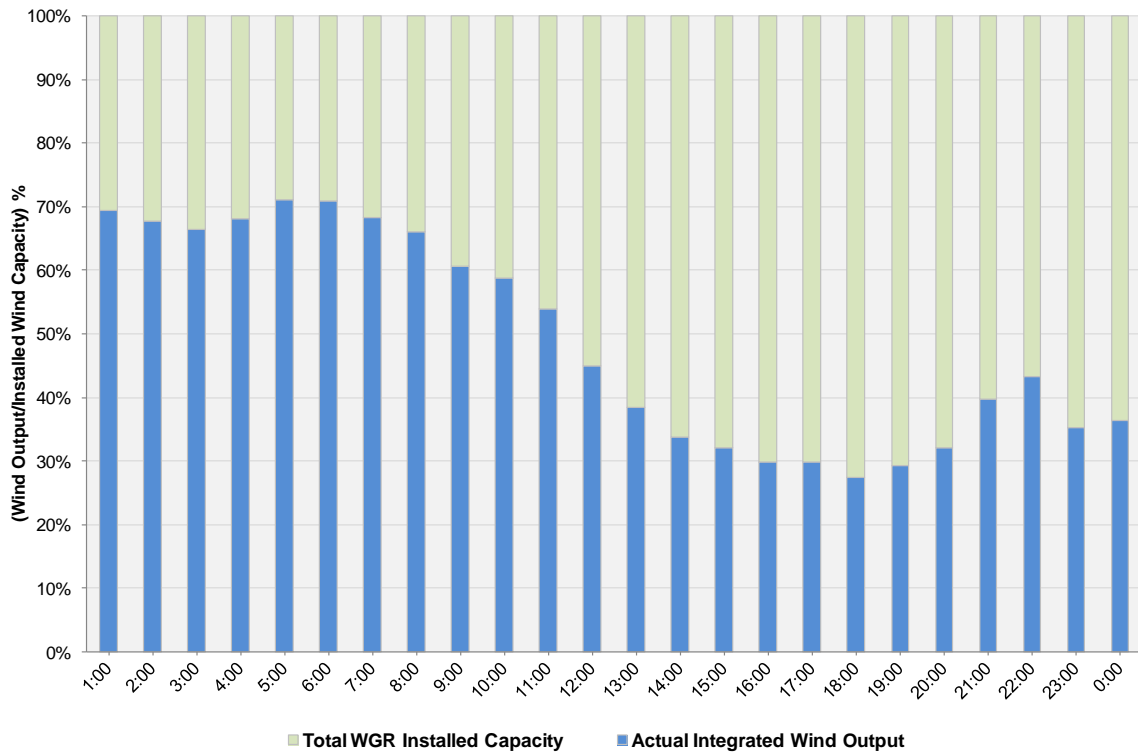
## ERCOT Grid Operations Wind Integration Report: 12/03/2012

Peak Load	<b>39,711 MW</b>
Load Peak Hour (HE)	<b>19</b>
Wind over Peak	<b>2,866 MW</b>
Wind Record 11/10/12	<b>8,521 MW</b>
Max Wind Value	<b>7,101 MW</b>
Wind Peak Time	<b>05:12</b>
Wind Integration %	<b>26.90%</b>

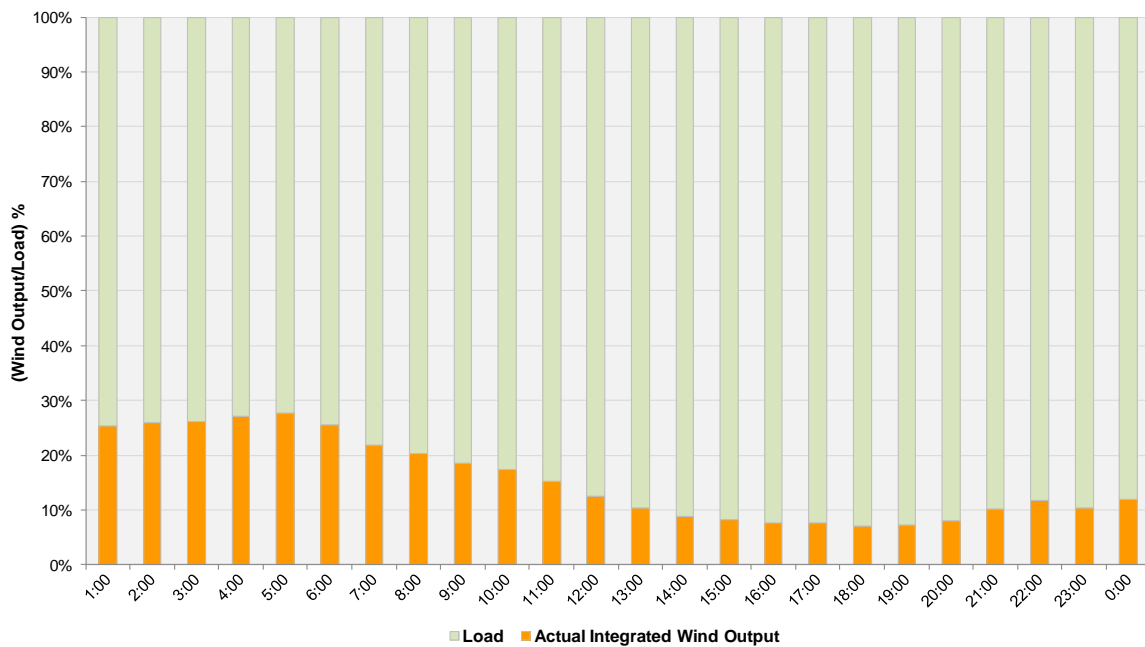
**Hourly Average Actual Load vs. Actual Wind Output  
12-03-2012**



**Actual Wind Output as a Percentage of the Total Installed Wind Capacity**  
**12-03-2012**



**Actual Wind Output as a Percentage of the ERCOT Load**  
**12-03-2012**



ERCOT Load vs. Actual Wind Output 11/26/2012 - 12/3/2012

